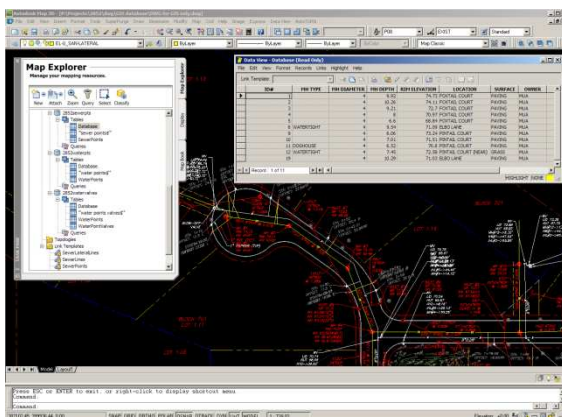
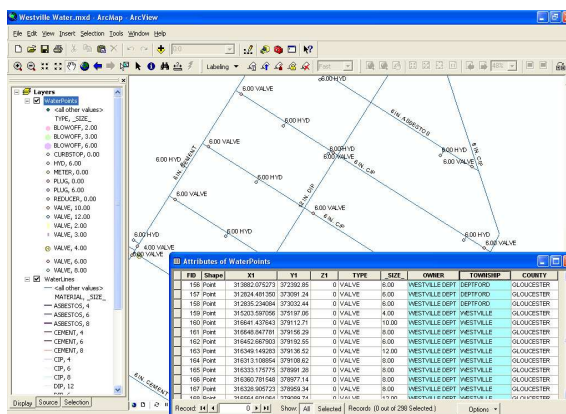


Geographical Information Systems (GIS)

CES provides GIS services for property owners, developers, municipalities and for the New Jersey Department of Environmental Protection (NJDEP). GIS data gathering can be completed thru legal descriptions, topographic, ALTA and boundary surveys. One example of GIS services CES can provide, is the collection of data for utility mapping which can include water and waste water systems and stormwater systems. Information can be combined with an existing GIS system or the creation of a new system. CES prepares GIS mapping required by municipalities for as built information and the NJDEP for integration into existing systems.



- **Bobby's Hunt Residential Subdivision, Mount Laurel Township, Burlington county, New Jersey** – CES prepared an as built survey of the utilities on site as required by the municipality. CES provided GIS data, including water and sewer information (points and line spatial data), in the required GIS format following the database fields provided by the municipality. Data was assembled in AutoCAD Map and was delivered in an ESRI format to be compatible with the existing GIS system. This data was incorporated into Mount Laurel's GIS system to expand their comprehensive plan.



- **Westville Water Mapping, Borough of Westville, Camden County, New Jersey** – CES prepared a CAD mapping of the Westville Water system. CES documented items like size and material and location of the conveyance system. Documentation was incorporated into the GIS database for water services provided to other municipalities. CES submitted required GIS data to the NJDEP. This data is incorporated into a state wide GIS system.

- **South Jersey Transportation Authority, New Jersey** – CES provided stormwater outfall mapping services as one of many actions that the Authority took in order to comply with the New Jersey Pollutant Discharge Elimination System (NJPDES) Phase II. CES located over 1800 outfall structures and provided shape files with attributes to be readily incorporated into a Geographical Information System.



consulting engineer services

Engineers, Planners, and Land Surveyors

*Serving NJ and the
Surrounding Area Since 1964*